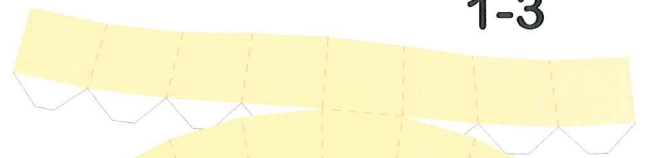




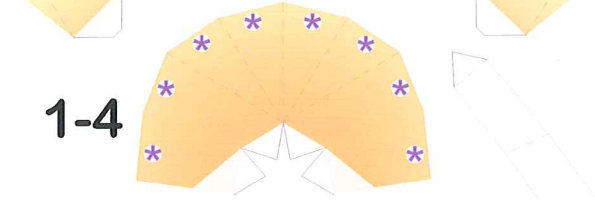
1-2



1-3



1-1



1-4

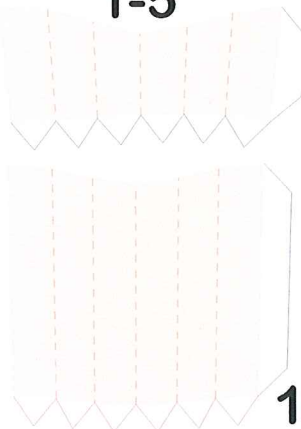
1-8

1-8

1-5

3-1

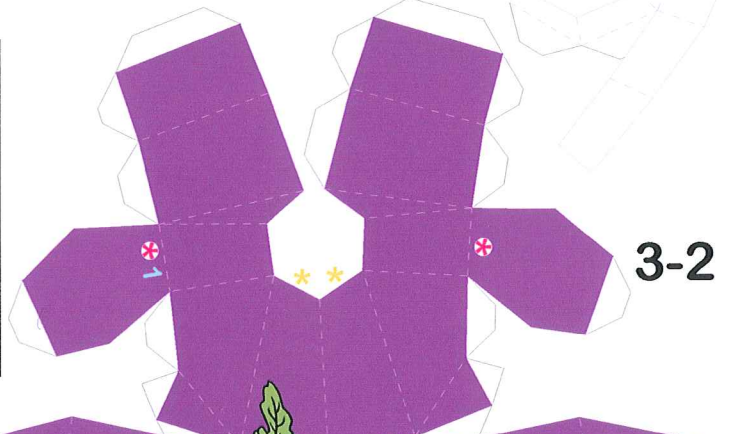
3-3



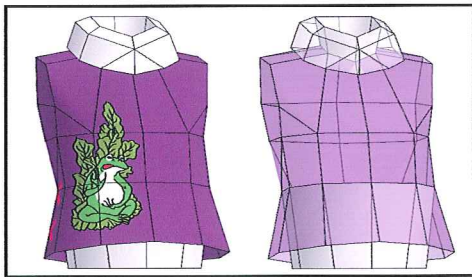
1-6



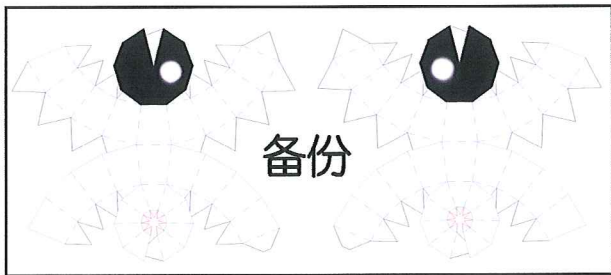
躯体



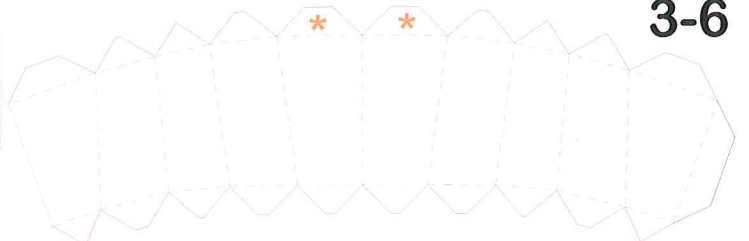
3-2



3-4



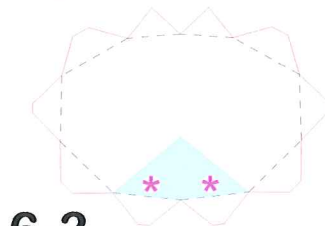
备份



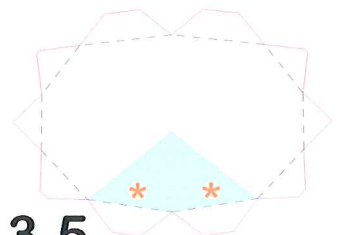
3-6



9-5



6-3



3-5

2-5



2-1a



2-2a



2-6



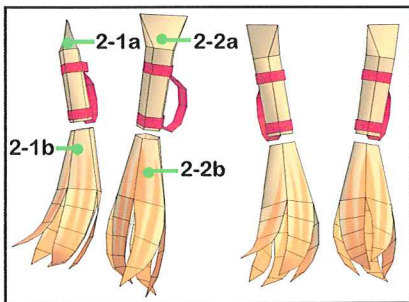
2-1b



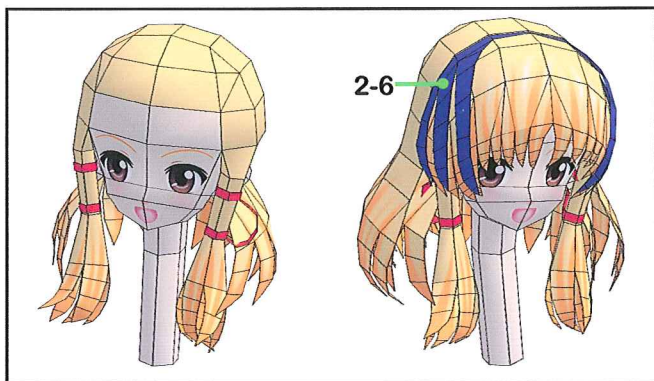
2-2b



2-4

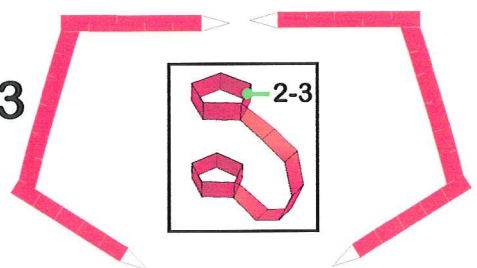


1-7

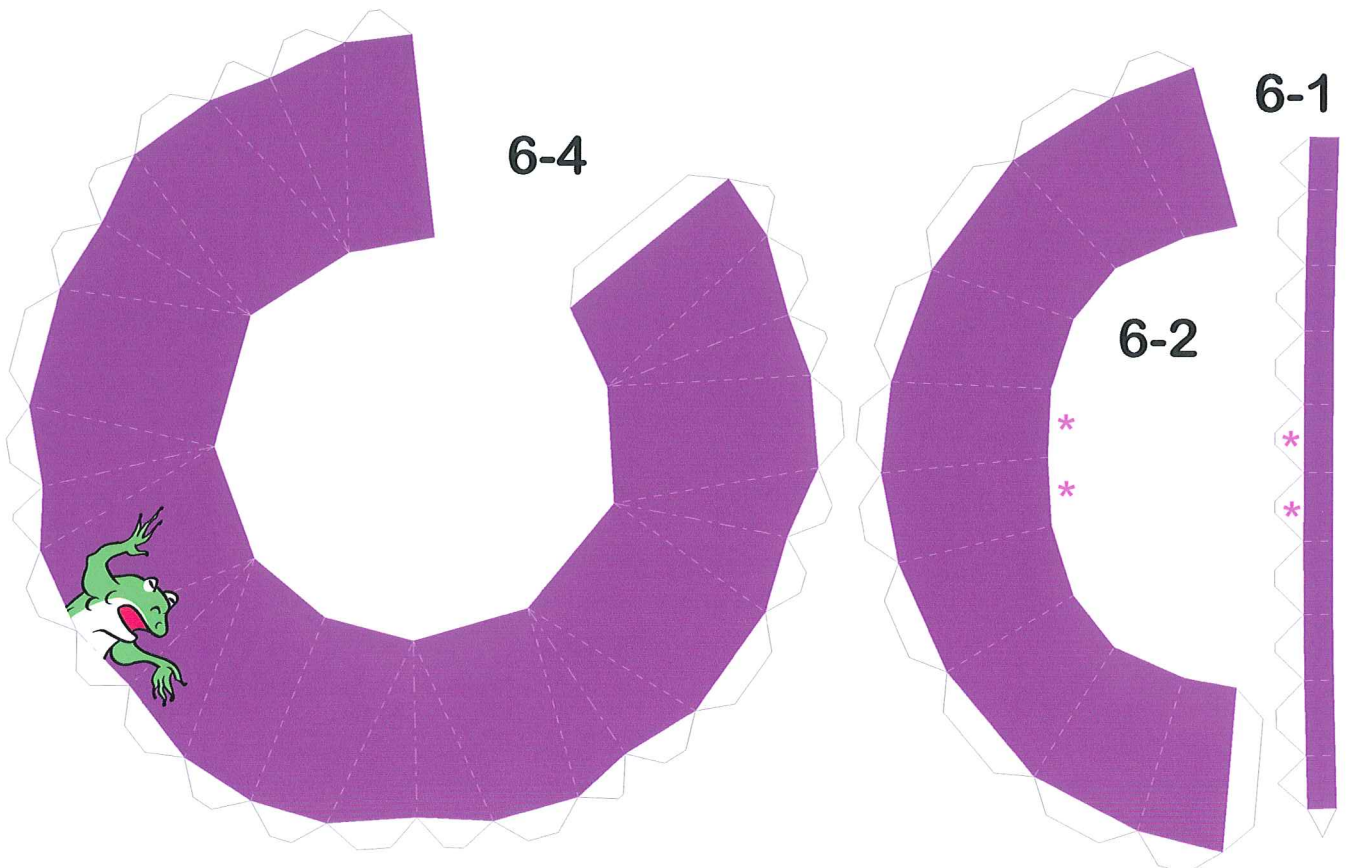
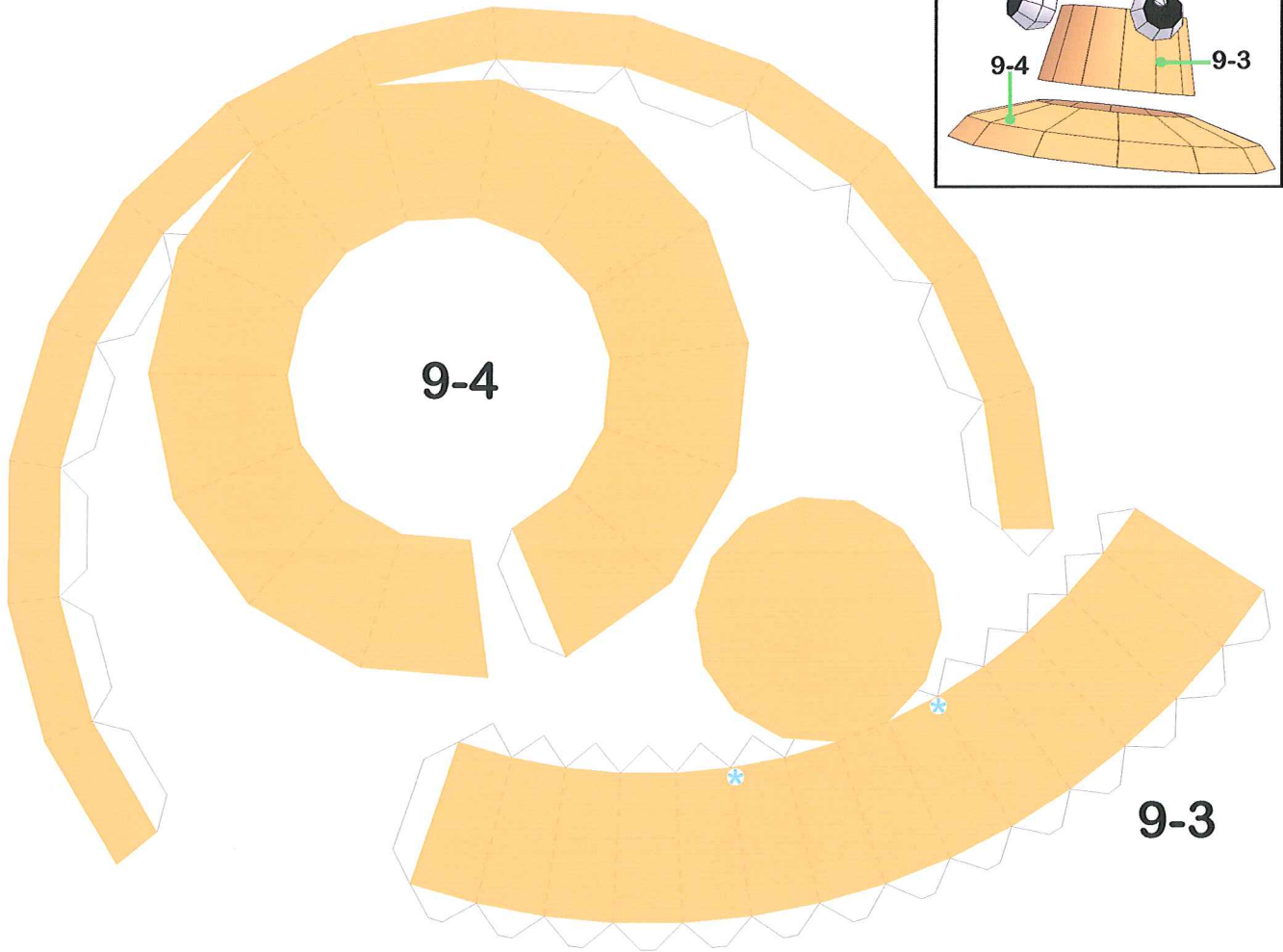
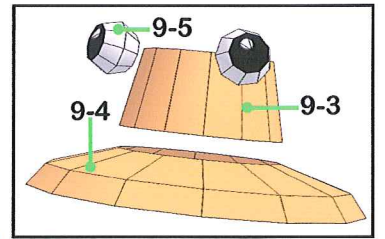


红绳2-3零件在小辫上套粘

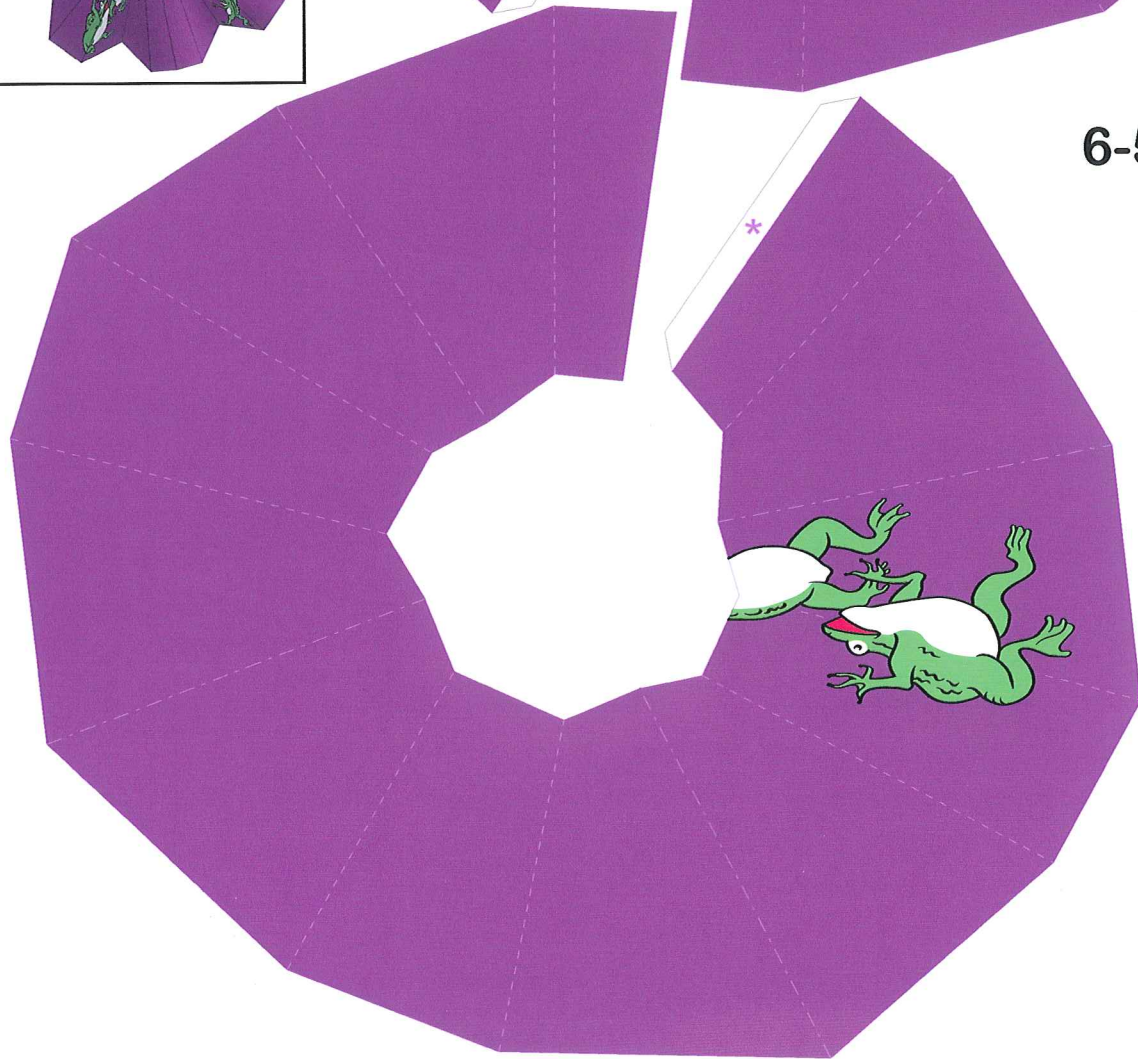
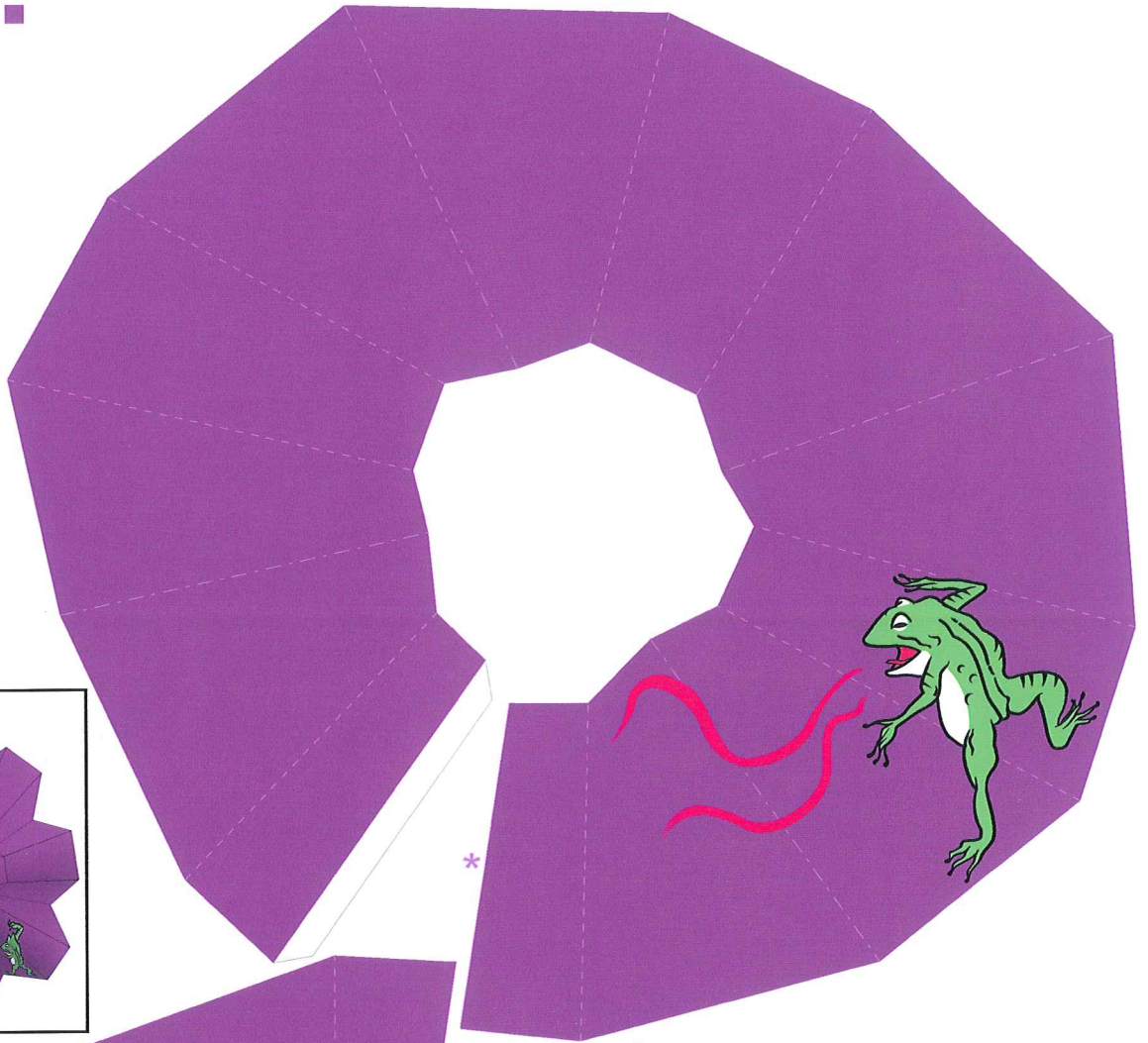
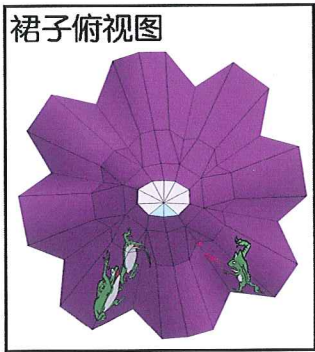
2-3



请反面打印帽子色 裙子色 ————

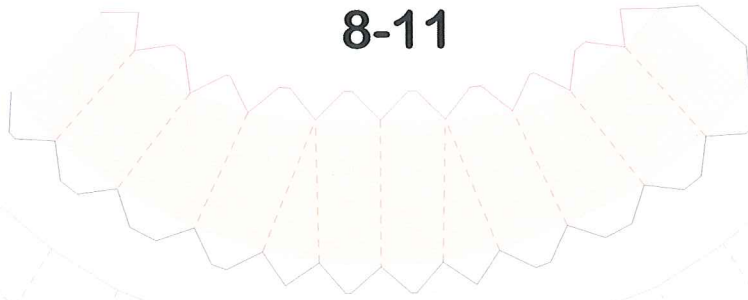


请反面打印裙子色——■



6-5

8-11



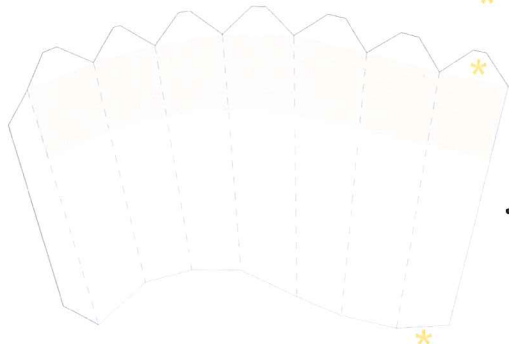
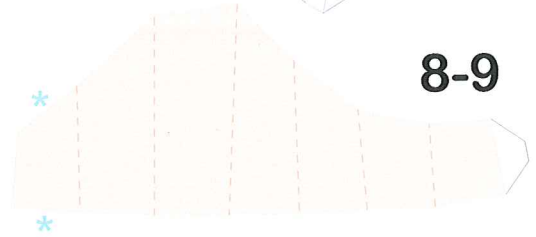
8-10



7-9

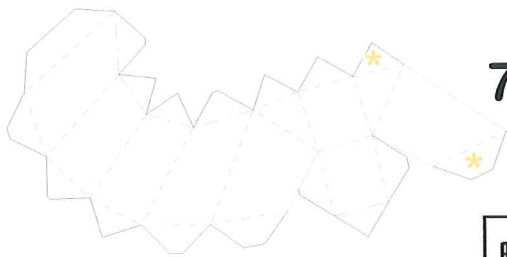
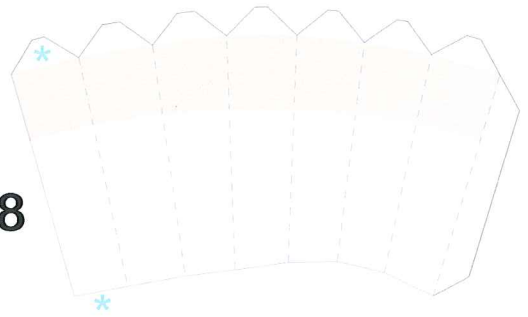


8-9



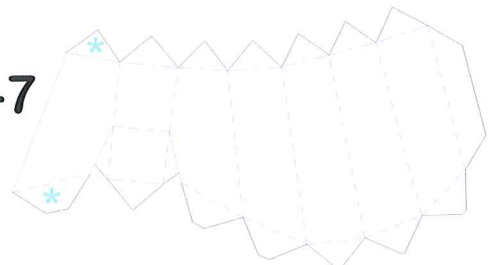
7-8

8-8

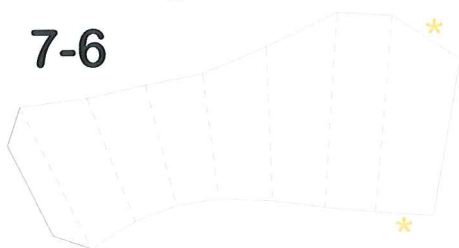


7-7

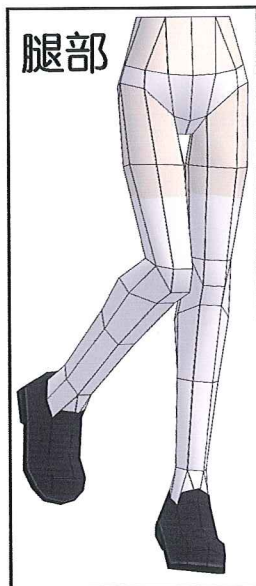
8-7



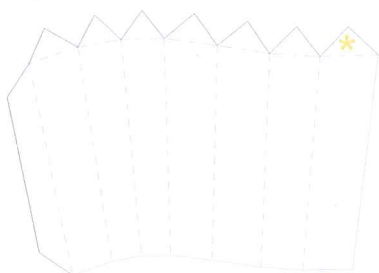
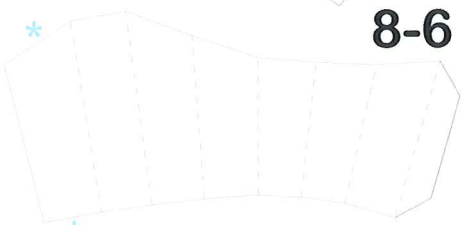
7-6



腿部

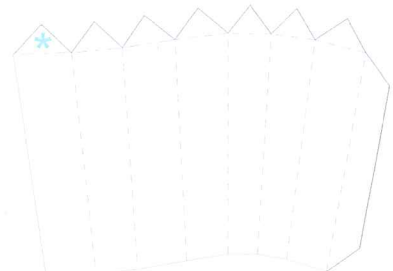


8-6



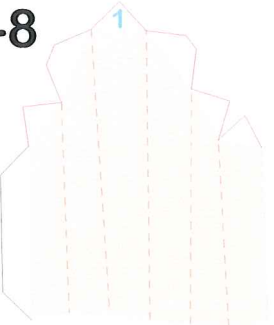
7-5

8-5



手部从指尖开始粘连 手部做完后粘连在袖子里

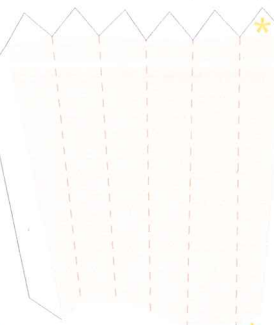
4-8



4-7



4-6



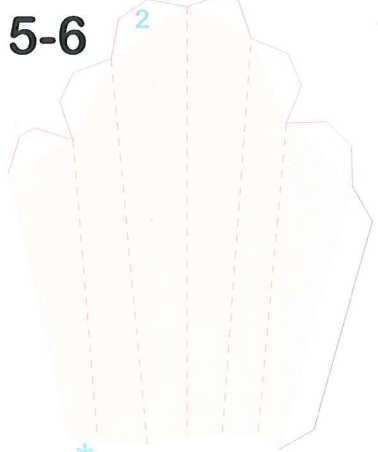
4-4



4-5



5-6

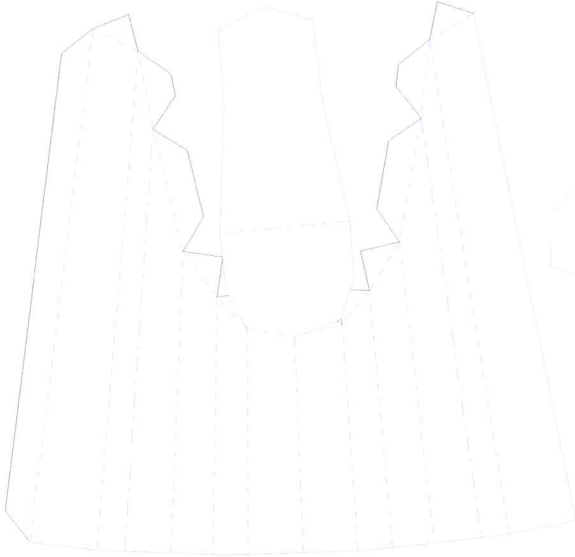


5-4

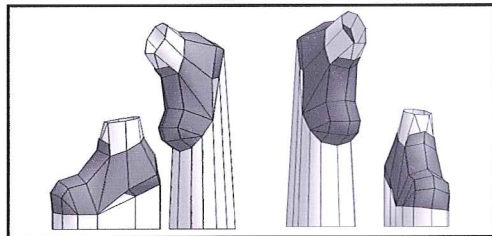
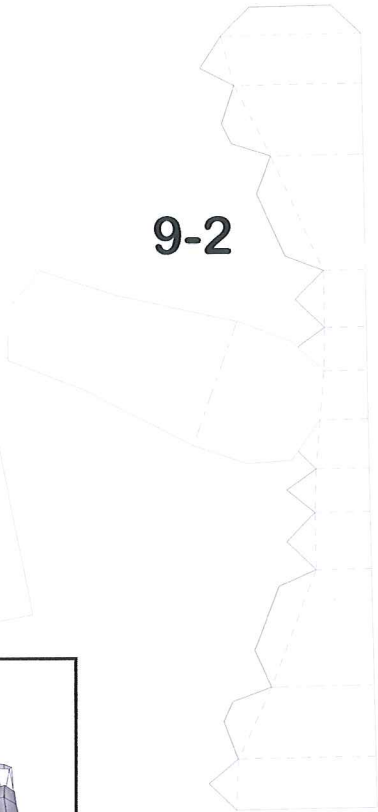


5-5

9-1



9-2



7-4



8-4



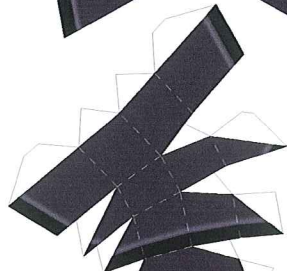
7-3



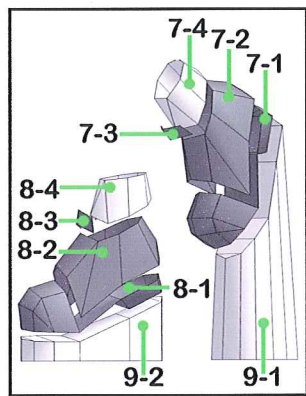
8-3



7-2



8-2

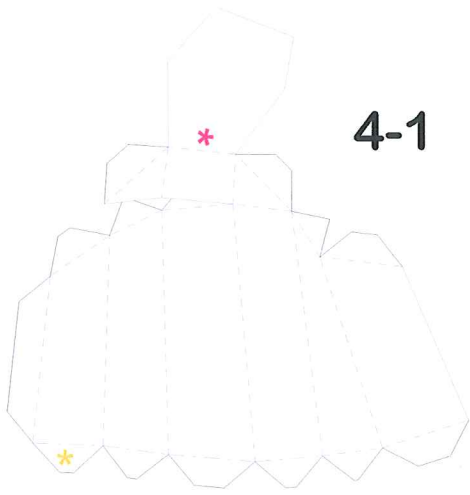


7-1



8-1

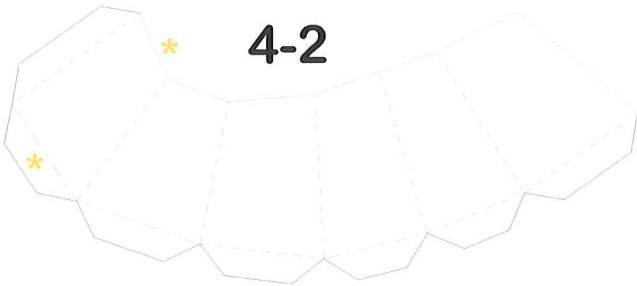




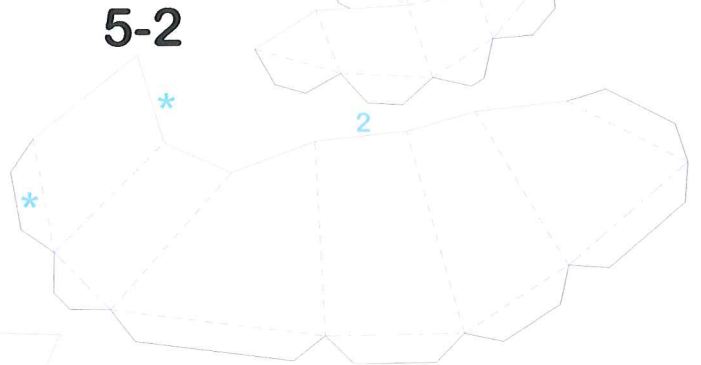
4-1



5-1



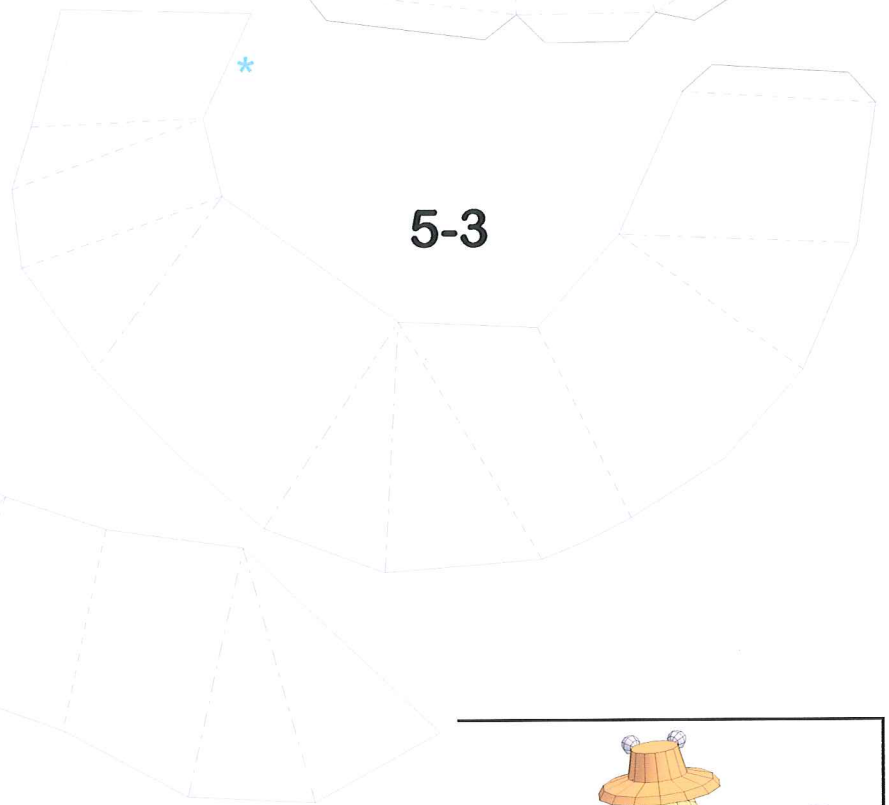
4-2



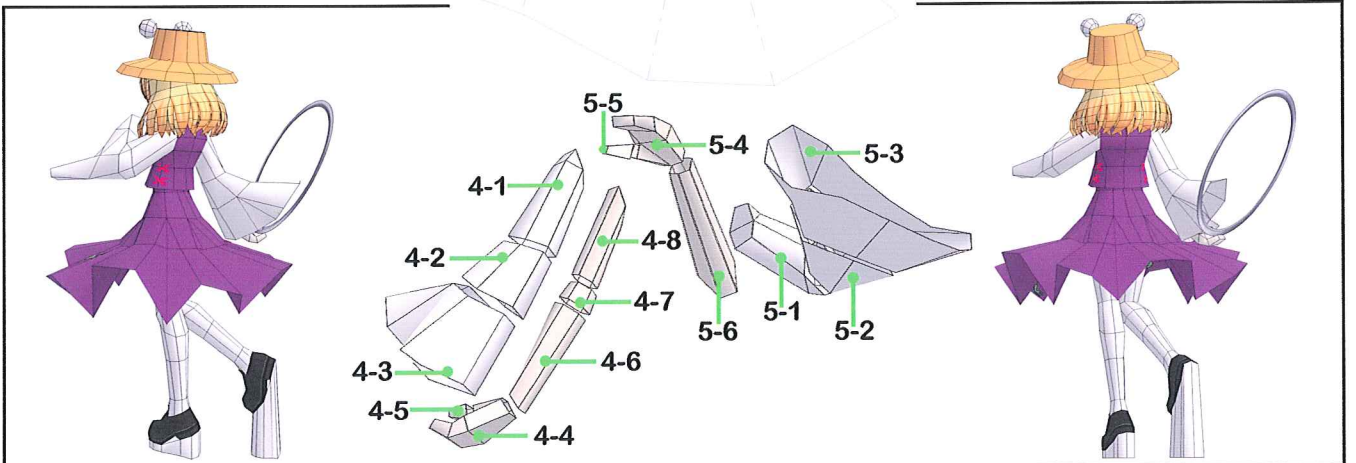
5-2



4-3



5-3





挖出头部位备份零件后 再对粘铁环零件 再裁剪
潮湿地区 纸片铁环可能会立挺不起来
建议中间加粘厚纸片 增加强度