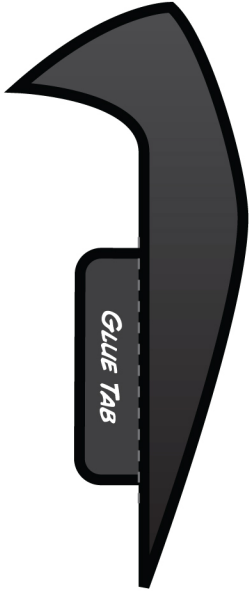


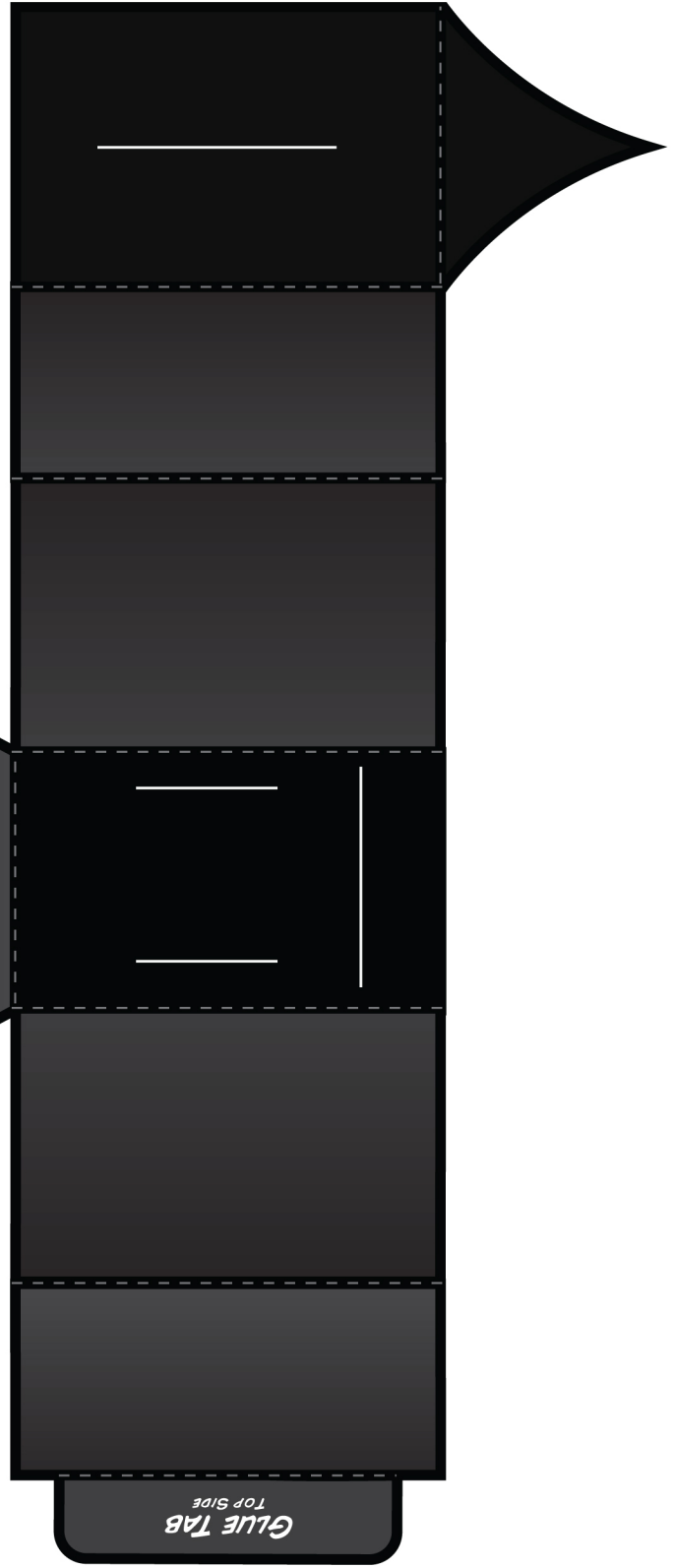
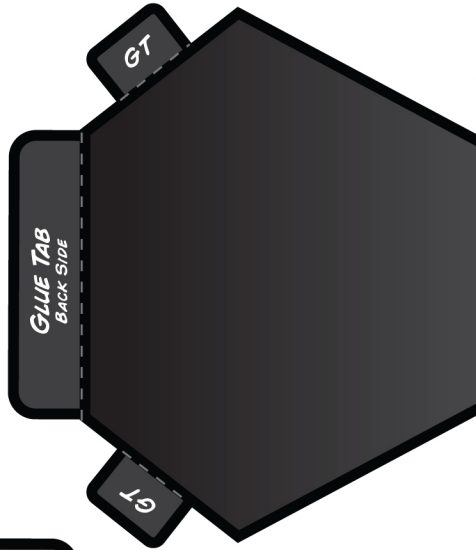
*lil' Death*



*FLAP RIGHT*



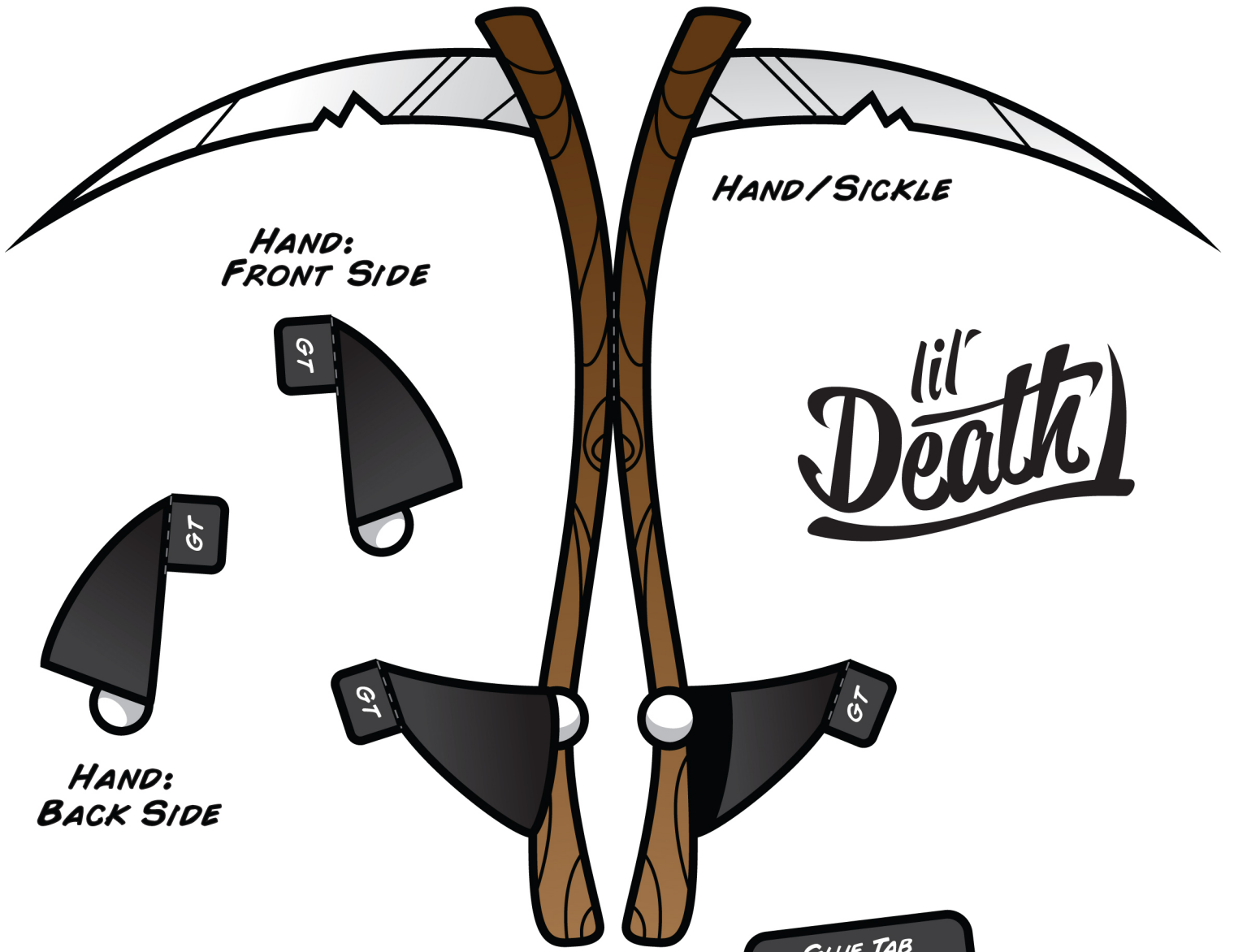
*FLAP LEFT*



*HOOD*



*FACE*

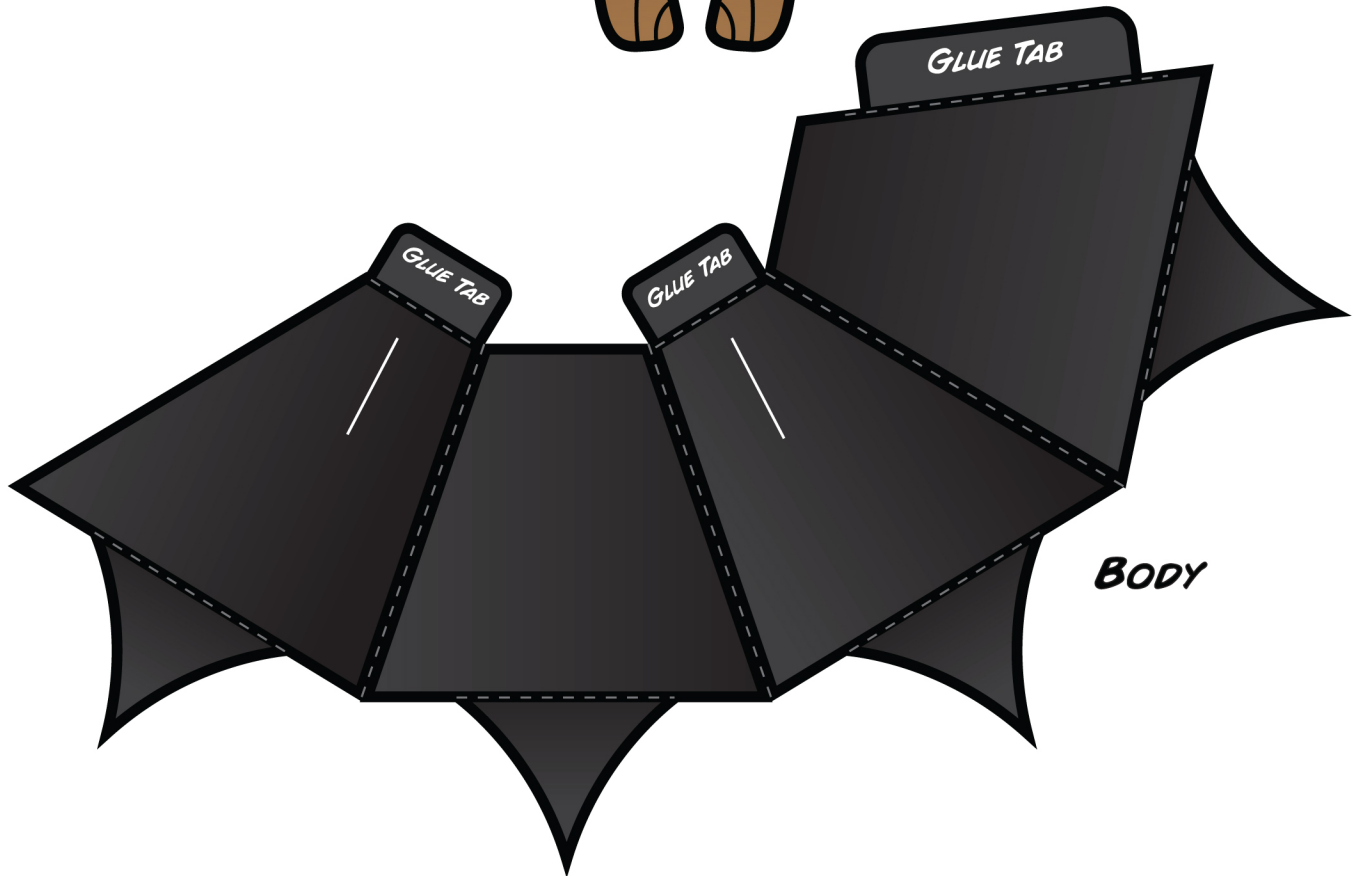


**HAND:  
FRONT SIDE**

**HAND/SICKLE**

**lil'  
Death**

**HAND:  
BACK SIDE**



**BODY**

# Lil' Death: Paper Model Instructions

[www.urbanthreads.com](http://www.urbanthreads.com)

## *Tips:*

- *For best results, regular or thick cardstock paper is recommended.*
- *A combination of a hobby knife and scissors can make the cutting and trimming process easier.*
- *A quick-drying and strong adhesive glue stick will help the construction be quick and easy.*
- *Use a black marker and draw over the fold marks and creases to really make your model look sharp!*
- *Paper clips can be used to clamp glue tabs together while they dry.*
- *A plastic card (gift card, library card, etc.) works well for scoring and folding the paper.*

## **Let's get started!**

### Step 1

- Cut out the body piece. Use a black felt-tipped marker to touch up the exposed edges if desired. With a hobby knife, cut a slit on top of the white lines (located on the sides with little glue tabs). This is where the arms will go later.
- Next, score/fold the glue tabs (along the dotted line) toward the non-printed side. Fold the triangular tabs towards the printed side. Fold the body pieces together so that the big glue tab can connect the body together.
- Finally, glue the big tab to the inside of the body piece to connect. Press and hold.

### Step 2

- Cut out the hand/sickle. Score/fold the glue tabs towards the printed side of the paper. Score and fold along the dotted line to bring both sides together. Apply glue to one of the sides (except the glue tabs.) Press and hold together. Use a black felt-tipped marker to touch up the exposed edges if desired. Set aside for later.

### Step 3

- Cut out the other hand pieces. Score and fold glue tabs towards the printed side of the paper. Apply glue to one side of the hand (except for the glue tabs). Press and hold both sides of the hand together.

### Step 4

- Cut out the hood piece. Next, cut straight slits along the white lines. Score and fold the glue tabs towards the non-printed side of the paper. Score and fold the different sections of the hood toward the non-printed side of the paper. As the hood folds together, it should take the shape of a hexagon. Apply glue to the printed side of the (top side) glue tab and attach to the non-printed side of the

paper (top of the hood). Press and hold. Use a black felt-tipped marker to touch up the exposed edges if desired. Set aside for later.

#### Step 5

- Attach the hood piece with the body piece by fitting the glue tabs from the body through the cut slits of the bottom of the hood. Apply glue to the non-printed side of the glue tabs and fold them down against the hood piece. Press and hold.

#### Step 6

- Cut out the (right and left) flap pieces. Score and fold the glue tabs towards the printed side of the paper. Next, apply glue to the non-printed sides of the flap (without applying to the glue tabs) and stick together. Press and hold. Use a black felt-tipped marker to touch up the exposed edges if desired.
- Fold the tabs together and slide them through the slit mark on top of the hood piece (the narrow sharp edge should be facing the front of the hood).

#### Step 7

- Cut out the face piece. Score and fold the glue tabs towards the non-printed side. Apply glue to the printed side of the glue tab at the top of the skull. Put the face piece inside the hood by inserting the bottom glue tab through the slit of the hood. Apply glue to the bottom of the printed side of the glue tab and fold it toward the hood. Press and hold.
- Apply pressure to the top glue tab (that you already applied glue too) to the top of the hood piece. Press and hold.
- Finally, apply glue to the printed side of the glue tabs on the back side of the hood. Fold the piece up to seal off the hood. To the best of your ability, firmly apply pressure to the glue tabs and the hood. Press and hold.
- If you desire, color the inside the hood with a black felt-tipped marker over the white paper. (This will help make your model come to life!)

#### Step 8

- Attach sickle hand to the left side of the body by sliding the arm's glue tabs through the slit of the body. Apply glue to the printed side of the tabs, fold and press against the body.

#### Step 9

- Attach single hand to the right side of the body by sliding the arm's glue through the slit of the body. Apply glue to the printed side of the tabs, fold and press against the body.

#### Step 10 (optional)

- If you desire, use a black felt-tipped marker to draw over the fold/crease lines on the model. This will help your model look clean and polished!

#### Step 11

- Enjoy!